

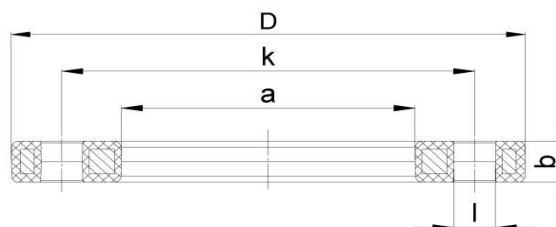
## BACKING FLANGE, PP-STEEL ANSI

03 Update - 05/2022

### TECHNICAL DATA

Article No	001 530 7121 0250
d (mm)	250
DN (mm)	250
Inch	10"
D (mm)	412
a (mm)	288
k (mm)	361,9
b (mm)	32
l (mm)	32
Weight (Kg)	9,780
Box Quantity (pcs)	1
Box Dimension (pcs)	45,7x45,7x4,5

### INJECTION MOULDED



### IDENTIFICATION OF PRODUCT

D	250x10"
BOLT CIRCLE	150 lbs
RAW METARIAL	PP %30 Glass-fibre Reinforced with steel ring UV-Resistant suitable for outdoor use
TRADEMARK	NTG
EXECUTION	Injection Moulded
PRESSURE CLASS	Class 150
STANDARD	ANSI ASME B16,5 Class150 ASTM D4024 BS 1560 BS EN 1759

### SPECIFICATION

NUMBER OF HOLES	12
BOLT	M 22
TIGHTENING TORQUE (Nm)	80

Tolerance on diameters and thickness according to the standards. The other dimensions are specialized. Tolerance  $\pm 5\%$ . NTG PLASTIK reserves all the right to change any information without giving prior notice. The production, distribution and utilization of this document without explicit authorization is prohibited.